
GIFT A TREE

A native tree planted in someone's memory or to commemorate a meaningful milestone is a living tribute that benefits present and future generations.

Gift a tree to acknowledge—

- ❖ The birth or adoption of a child
- ❖ A wedding
- ❖ An anniversary
- ❖ A graduation
- ❖ A baptism
- ❖ A birthday
- ❖ A death
- ❖ Mother's or Father's Day
- ❖ Grandparent's Day
- ❖ Honoring someone's military service
- ❖ A special holiday
- ❖ A Bar/Bat mitzvah
- ❖ A team championship
- ❖ An influential teacher, coach
- ❖ Someone for a special accomplishment



When we plant trees, we plant the seeds of peace and the seeds of hope. -Wangari Maatha



WHY GIFT A TREE?

Middletown's Gift Tree program beautifies our public spaces with native trees that benefit our environment and add to our community heritage. Imagine how special a gift tree recipient will feel knowing a tree grows in Middletown in their honor.

In addition, your gift tree can help—

- ❖ Improve air quality
- ❖ Improve walkability
- ❖ Reduce water runoff
- ❖ Conserve water
- ❖ Lower crime rates
- ❖ Control soil erosion
- ❖ Remove carbon from the atmosphere
- ❖ Increase the life of asphalt/hard surfaces
- ❖ Support local ecosystems
- ❖ Add value to community spaces



MIDDLETOWN SUSTAINABILITY
COMMITTEE
31 West Main Street, Middletown, MD 21769

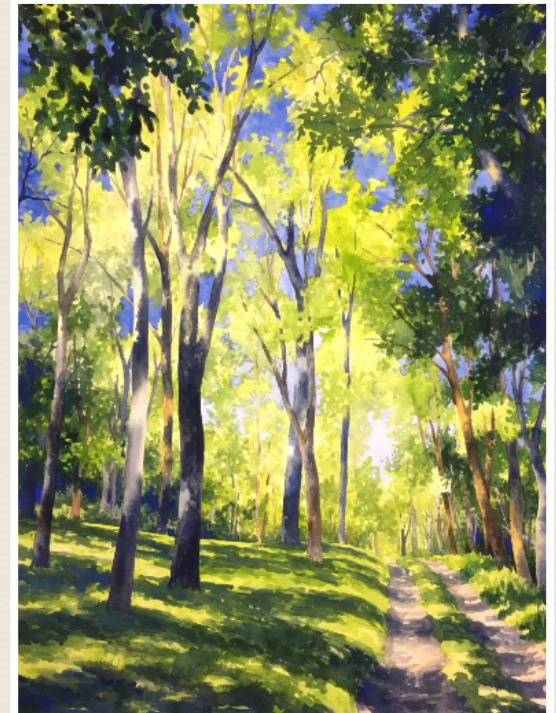
For more information, contact Cindy Unangst at
cunangst@ci.middletown.md.us

(301)-371-6171

www.greenmiddletown.com

GIFT A TREE

A Program of the Middletown
Sustainability Committee



Watercolor by Kesra Hoffman, used with permission

*The true meaning of life is to plant
trees, under whose shade
you do not expect to sit.*

-Nelson Henderson



APPLICATION

Donor Information:

Name: _____

Address: _____

City: _____ State: _____ Zip: _____

Phone: _____

Email: _____

This Gift Tree is for (name or event): _____

In Honor of: _____

In Memory of: _____

Tree Plaque: Please include any additional information to be engraved on the Tree Plaque: _____



➔ If you prefer, scan the QR code to access a fillable PDF application online.

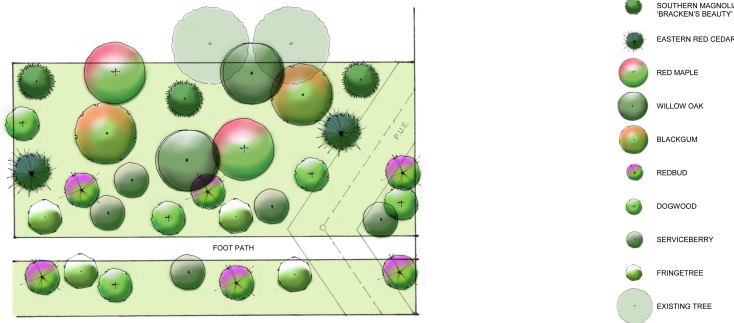
Submit your application to:
Middletown Sustainability Committee
31 West Main St., Middletown, MD 21769

Payment Information:

After submitting your application, you will meet with a Sustainability Team member to select your tree, its location, and plaque inscription. Payment is required to order your tree and plaque. Please make checks payable to "Town of Middletown" (payments are tax deductible).

ABOUT GIFTING A TREE

- ❖ Your gift tree will be a high-quality, native species with a 2 inch caliper.
- ❖ A custom plaque honoring your person/event will be installed with your tree.
- ❖ A certificate of acknowledgement will be sent to the donor.
- ❖ A list of tree donations will be maintained on the Middletown website.



The best time to plant a tree is 25 years ago, the second best time is now. -Proverb

TOWN OF MIDDLETOWN
MEMORIAL TREE PROGRAM
LINDEN BOULEVARD

Siting A Gift Tree:

- ➔ This Gift Tree Grove site plan, designed by Stadler Nurseries, is filled with native species to beautify the Cone Branch Trail at Linden Boulevard.
- ➔ This is one of several locations in Middletown ready to receive a gift tree.

HOW TO ORDER:

- ❖ Fill out the application included in this brochure and submit as directed.
- ❖ You will be contacted by a member of the Sustainability Committee to assist you with choosing a native tree and site appropriate location. The town has designated several areas for gift trees.
- ❖ Tree prices vary by species ranging from \$300-600. The price includes a customized tree plaque.
- ❖ All trees are planted in the fall (by the end of October) to ensure the best growing conditions for the trees. Trees are planted and cared for by the town and guaranteed for 2 years.
- ❖ Applications received after September 30, will have trees planted the following year.